

CODE	MODEL	TYPE	POWER SUPPLY	SERIES
11090019	M9MT40	NEUTRAL ELEMENT		MILO 900

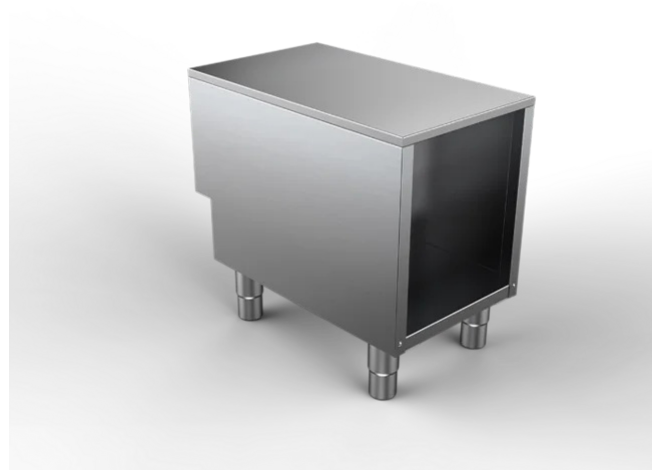
DESCRIPTION

OPEN CABINET FOR TOP ELEMENT
TECHNICAL DATA

IPX Protection Grade (mm)	IPX4
---------------------------	------

DIMENSIONS DATA

Product dimensions (mm)	400W x 848 P x 613 H
Net weight (kg)	13
Gross weight (kg)	26
Packaging dimensions (m3)	430 x 972 x 1264
Packaging volume (m3)	0.53


CONSTRUCTIONAL FEATURES

Control panel, side and back panels in 1 mm thick AISI 304 stainless steel with Scotch Brite finish. Adjustable feet, in AISI 304 stainless steel, scratch-resistant sole made of insulating plastic material. Foot extension 60mm, standard worktop height 900mm (minimum 895, maximum 955).

CODE	MODEL	TYPE	POWER SUPPLY	SERIES
11090019	M9MT40	NEUTRAL ELEMENT		MILO 900

DESCRIPTION

OPEN CABINET FOR TOP ELEMENT

TECHNICAL DRAWING

